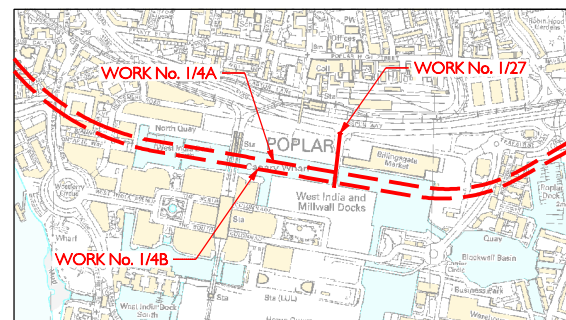
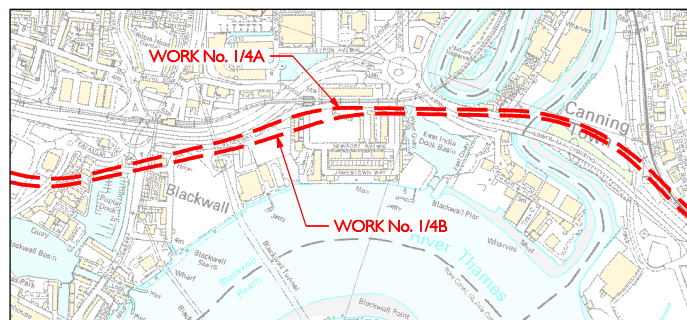


LONDON BOROUGH OF TOWER HAMLETS
WORKS Nos. 1/4A, 1/4B & 1/27



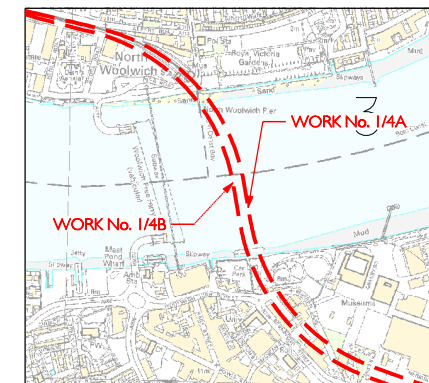
Proposed Tunnels Under and Bridge over West India Dock North.

LONDON BOROUGH OF TOWER HAMLETS
WORKS Nos. 1/4A & 1/4B



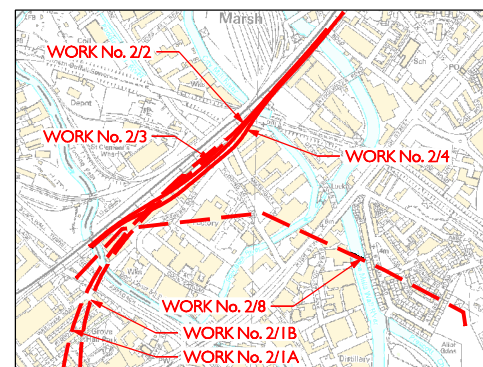
Proposed Tunnels under Poplar Dock, East India Dock Basin & River Lea or Lee.

LONDON BOROUGH OF NEWHAM & GREENWICH
WORKS Nos. 1/4A & 1/4B



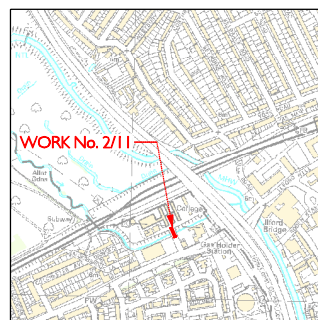
Proposed Tunnels under River Thames.

LONDON BOROUGH OF TOWER HAMLETS & NEWHAM
WORKS Nos. 2/1A, 2/1B, 2/2, 2/3, 2/4 & 2/8



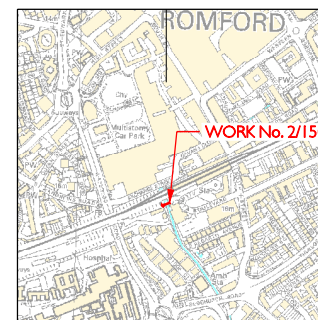
Proposed Tunnels (Works Nos. 2/1A & 2/1B) under River Lea or Lee.
Proposed Bridges (WORKS Nos. 2/2 & 2/3) over City Mill River.
Proposed Viaduct (WORKS No. 2/4) over City Mill River.
Proposed Sewer Tunnel (WORK No. 2/8) under River Lea or Lee, Bow Back River and Three Mills Wall River.

LONDON BOROUGH OF NEWHAM
WORK No. 2/11



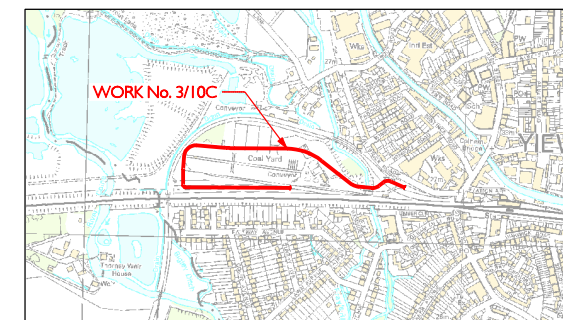
Proposed Bridge over Alders Brook.

LONDON BOROUGH OF HAVERING
WORK No. 2/15C



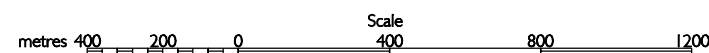
Proposed Bridge over River Rom.

LONDON BOROUGH OF HILLINGDON
WORK No. 3/10C



Proposed Bridge over Fray's River.

THIS MAP IS BASED UPON ORDNANCE SURVEY MATERIAL WITH THE PERMISSION OF ORDNANCE SURVEY ON BEHALF OF THE CONTROLLER OF HER MAJESTY'S STATIONERY OFFICE © CROWN COPYRIGHT. UNAUTHORISED REPRODUCTION INFRINGES CROWN COPYRIGHT AND MAY LEAD TO PROSECUTION OR CIVIL PROCEEDINGS. (GLA - 100032379) (2005).



Scale is 1:50,000 at A1 size

Drawing No. 110401-G0G00-F00-F-50028 Rev A