

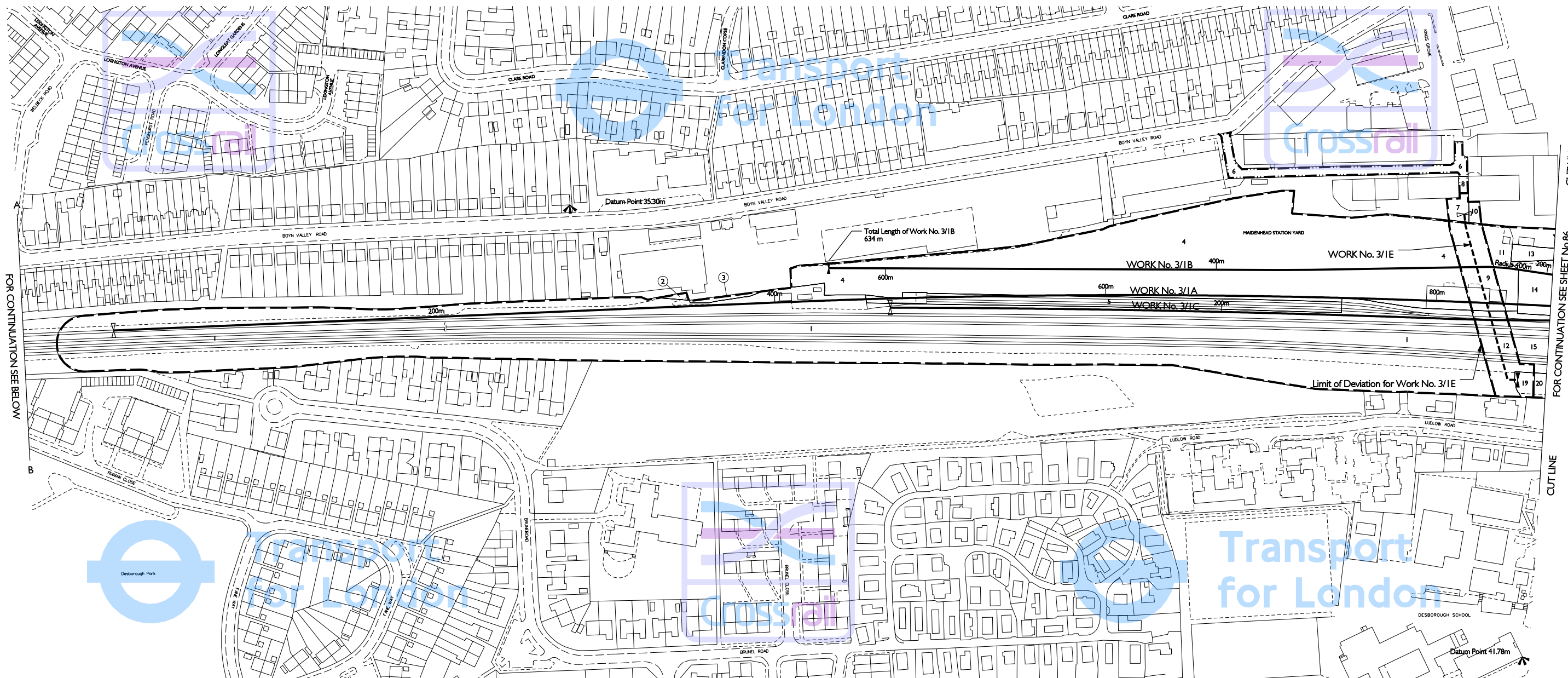
# COUNTY OF BERKSHIRE ROYAL BOROUGH OF WINDSOR & MAIDENHEAD

IN PARLIAMENT - SESSION 2004-05

CROSSRAIL

Works Nos. 3/1A, 3/1B & 3/1C (Railways)  
Work No. 3/1E (Sewer)  
For Section of Work No. 3/1A see Sheet No. 220  
For Sections of Works Nos. 3/1B & 3/1C see Sheet No. 221  
For Section of Work No. 3/1E see Sheet No. 222

## PLAN



FOR CONTINUATION SEE BELOW

FOR CONTINUATION SEE SHEET No.86



THIS MAP IS BASED UPON ORDNANCE SURVEY MATERIAL WITH THE PERMISSION OF ORDNANCE SURVEY ON BEHALF OF THE CONTROLLER OF HER MAJESTY'S STATIONERY OFFICE © CROWN COPYRIGHT. UNAUTHORISED REPRODUCTION INFRINGES CROWN COPYRIGHT AND MAY LEAD TO PROSECUTION OR CIVIL PROCEEDINGS. (GLA - 100032379) (2005).



The area enclosed by any limit of deviation or by any limit of land to be acquired or used is the area extending to the outer edge of the line marking those limits.  
For key to symbols and line styles see Index Sheet  
Scale is 1:1,250 at A1 size

Drawing No. 110401-W1G00-F00-F-50347 Rev J