

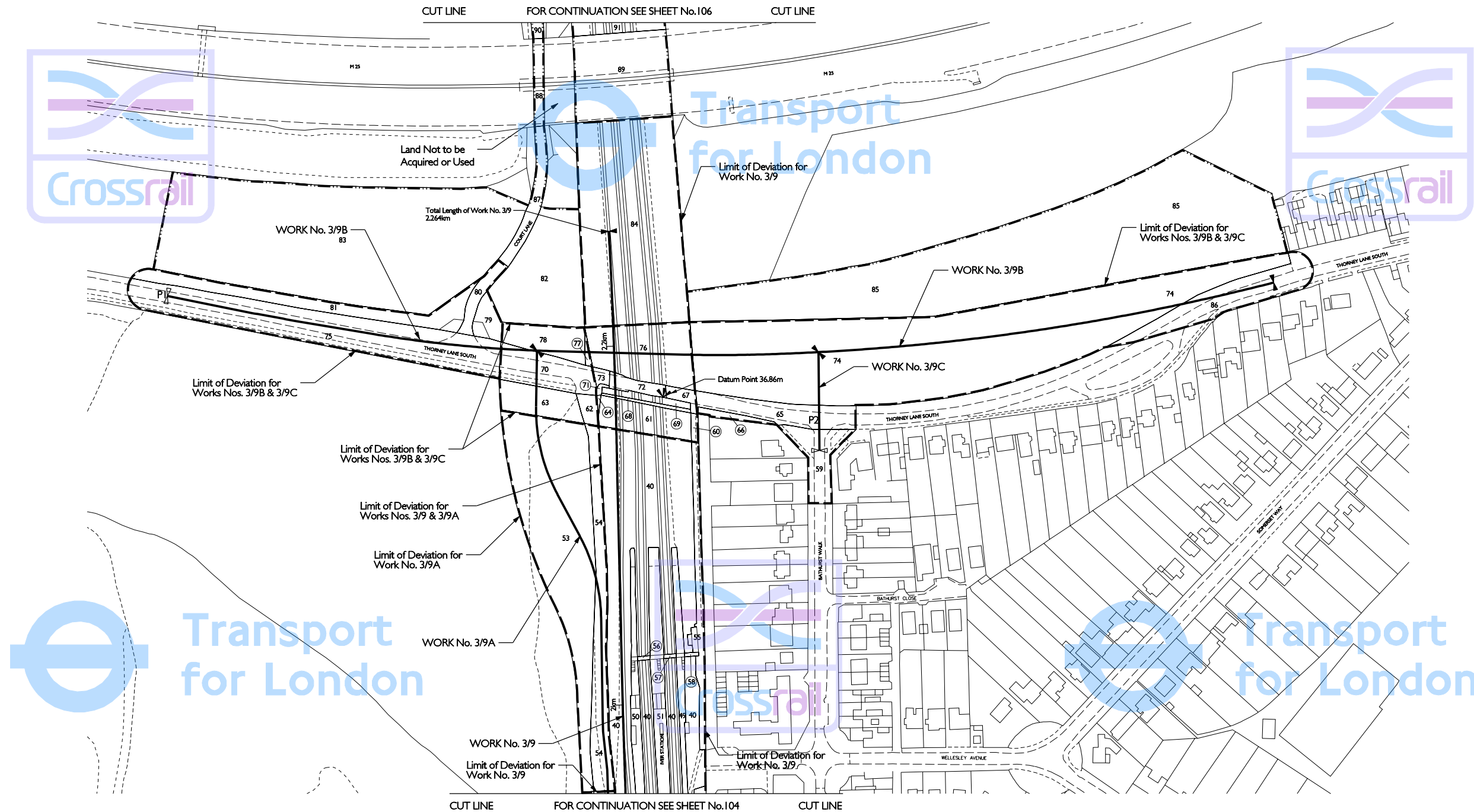
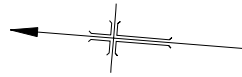
COUNTY OF BUCKINGHAMSHIRE DISTRICT OF SOUTH BUCKS PARISH OF IVER PLAN

IN PARLIAMENT - SESSION 2004-05

CROSSRAIL

Work No. 3/9 (Railway)
Works Nos. 3/9A, 3/9B & 3/9C (Roads)
For Section of Work No. 3/9 see Sheet No. 225
For Sections of Works Nos. 3/9A, 3/9B & 3/9C see Sheet No. 226

Existing Railway

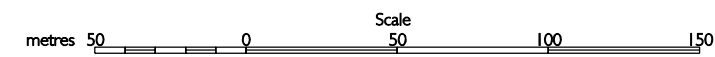


Transport for London

Transport for London

Transport for London

THIS MAP IS BASED UPON ORDNANCE SURVEY MATERIAL WITH THE PERMISSION OF ORDNANCE SURVEY ON BEHALF OF THE CONTROLLER OF HER MAJESTY'S STATIONERY OFFICE © CROWN COPYRIGHT. UNAUTHORISED REPRODUCTION INFRINGES CROWN COPYRIGHT AND MAY LEAD TO PROSECUTION OR CIVIL PROCEEDINGS. (GLA - 100032379) (2005).



The area enclosed by any limit of deviation or by any limit of land to be acquired or used is the area extending to the outer edge of the line marking those limits.

For key to symbols and line styles see Index Sheet
Scale is 1:1,250 at A1 size

Drawing No. 110401-W1G00-F00-F-50327 Rev J